

ElegantJBeans™

The Complete JavaBeans™ Component Library

Networking

The image displays several overlapping JavaBeans components for networking. At the top left is an FTP client interface with fields for 'FTP Server Host', 'Port' (set to 21), 'User Name', and 'Password', and buttons for 'Connect' and 'Disconnect'. Below it is an SMTP client interface with fields for 'SMTP Server Host', 'Port' (set to 25), 'Authentication allowed?' (checkbox), 'User name', 'Password', 'From', 'To', 'Cc', 'Bcc', 'Subject', and 'Attachments', along with a 'Browse' button. At the bottom left is a POP3 client interface with fields for 'POP3 Server Host', 'Port' (set to 110), 'User Name', and 'Password'. In the center is a dialog box titled 'Enter URL:' with a text input field. To the right of this dialog is an HTTP client interface with a large text area for 'HTTP Request:' and a 'Browse' button. At the bottom right is an HTTP response viewer with a table header containing 'No.', 'Sender', and 'Date', and a text area for 'HTTP Response:'.

URL: www.elegantJBeans.com

© Elegant MicroWeb Technologies Pvt. Ltd.

OVERVIEW

ElegantJBeans is a collection of JavaBeans™ Components developed for Java professionals. Development platform is not a constraint for ElegantJBeans. You can use ElegantJBeans component with J2SE, J2EE, JAVA applications and JAVA applets. ElegantJBeans can be imported in all major IDEs - to use it visually as well as through coding.

Your ready to use network protocol implementation for JAVA based solutions

When you are developing an FTP client, an e-mail client or a socket communication solution or an application that needs FTP capability built into it, ElegantJ Network Beans has a lot to make the development process simpler. The collection includes FTP, HTTP, POP3, SMTP, and MIME complaint message beans to meet your all type of network and communication related needs.

It includes Server, Server Socket, Datagram Packet and Datagram Socket too. The URL bean included in this collection contains powerful methods to get content encoding, content-expiration, content-length, content-type, and content-file. This is the best available collection of off the shelf networking beans for developers.

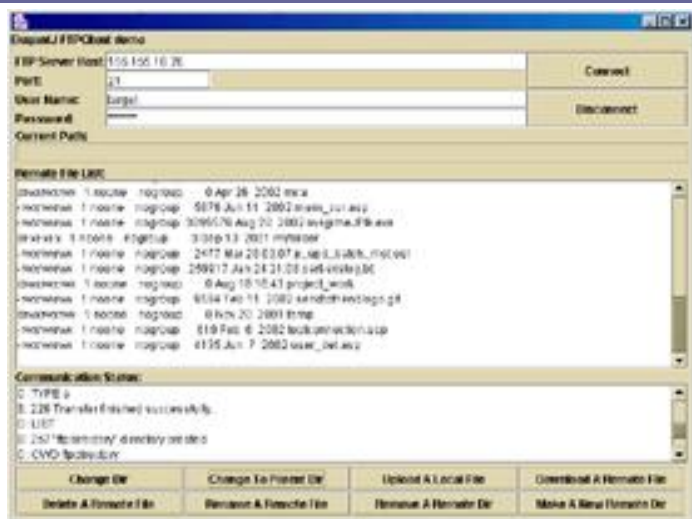
Bean COMPONENTS

Networking Bean



Other Beans with Networking Beans



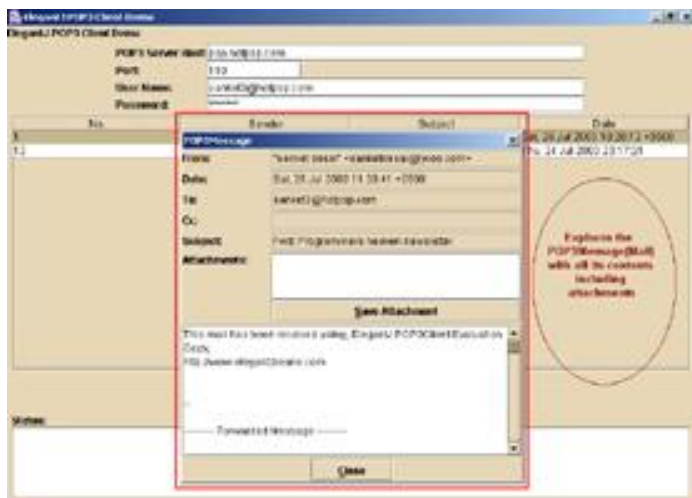


- User can connect to any FTP server
- Host name and port can be customized while connecting to FTP server
- ElegantJ FTP Client allows customizable user name and password, while connecting to FTP server
- Work with directory on server - get current directory name, change working directory, create or remove directory on FTP server.
- Using ElegantJ FTP Client, user can get file list of current working directory from FTP server
- Using ElegantJ FTP Client, User can upload a file, download a file, rename a file or remove a file from FTP server
- Provides method to disconnect from FTP server



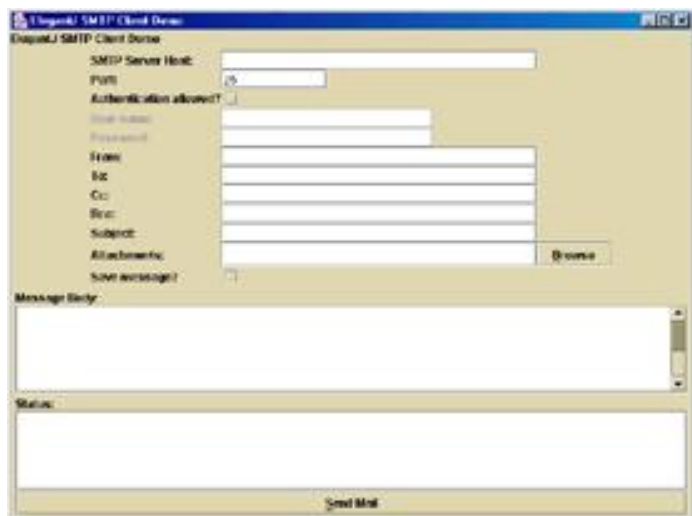
- ElegantJ HTTP Client supports GET, HEAD and POST methods of HTTP
- You can create and send HTTP requests to HTTP server on the fly
- ElegantJ HTTP Client provides method to generate HTTP request by setting fields and values of General Header, Entity Header and Request Headers
- User can post data to a HTTP web server from a string buffer as well as from a file. ElegantJ HTTP Client uses BASE64 encoding while sending data from file

POP3 Client



- User can set host name and port, while connecting to POP3 server
- User can set user name and password to connect to the POP3 server while connecting
- ElegantJ POP3Client JAVA bean can connect to any POP3 server
- User can fetch information about number of mails and mailbox size from the server
- This JAVA Bean has feature to retrieve header information and mail from server
- Facility to delete mail from server itself
- You can explore e-mail fields like TO, CC, From, Subject, Content Type, Date and Body Format
- You can explore body and attachments of mail. About attachments, you can get attachment count, size and file names
- Flexibility to save all the attachments at a time as well as separately
- ElegantJ POP3 Client includes method to disconnect from POP3 server

SMTP Client



- ElegantJ SMTP Client has facility to provide Hostname and port name while connecting to SMTP server
- A user name and password that user can set and use, to connect to SMTP server
- ElegantJ SMTP Client can connect to any SMTP Server
- ElegantJ SMTP Client provides MIMECompliantMessage to compose a mail, that may or may not have attachments, after composing mail, user can send mail using SMTP Client
- Provides option to save sent messages
- Includes a method to get last status from the client
- ElegantJ SMTP Client includes a method to disconnect from SMTP server

ElegantJBeans

The Complete JavaBeans™ Component Library

ElegantJ Message

ElegantJ Message Bean provides MIME (Multipurpose Internet Mail Extensions) compliant message format. Features are -

- ElegantJ Message Bean allows single part textual message as well as multipart messages by attaching any type of file with a mail message
- One can set fields of mail message header, like From address, To address, CC address, BCC address, Subject, MIME version, Organization, XMailer and Message Body
- With ElegantJ Message Bean you can attach multiple files with the message by a simple method call
- It encodes binary data using BASE64 encoding

ElegantJ URL Bean

ElegantJ URL Bean includes functionality of a URL (Uniform Resource Locator). Features are -

- ElegantJ URL Bean provides methods to get content-encoding, content-expiration, content-length, content-type, content-file of URL contents
- ElegantJ URL Bean provides methods to get contents of the resource specified by URL and save it as a local file

ElegantJ Socket Bean

ElegantJ Socket Bean includes client socket. A socket is an endpoint for communication between two computers.

ElegantJ Server Socket Bean

ElegantJ Server Socket Bean includes server sockets. A server socket waits for requests to come in over the network. It performs specific operations based on request, and then possibly returns a result to the requester.

ElegantJ Datagram Socket Bean

ElegantJ Datagram Socket Bean includes functionality of a socket for sending and receiving datagram packets. A datagram socket is the sending or receiving point for a packet delivery service.

ElegantJ Datagram Packet Bean

ElegantJ Datagram Packet Bean includes functionality of datagram packet. Datagram packets are used to implement a connectionless packet delivery service. Each message is routed from one computer to another solely based on information contained within that packet. Multiple packets sent from one machine to another might be routed differently, and might arrive in any order.

We support YOU, so you support YOUR users

Use our pre-prepared code in your application to speed up your development process. We provide FREE pre-purchase technical support to ensure successful evaluation. We provide total assistance from installing them, importing in all major IDEs and mapping a feature with your requirements. What you have to do is **just** mail us. We will help you find out if our Beans have a feature that you need. We also provide comprehensive technical documentation so that you can have answers for all your queries on your fingertip.

Download ElegantJBeans

Download free evaluation copy of any of our products from our web site www.elegantjbeans.com. Downloaded files contain detailed technical and user documentation, which will guide you through the process of installation, evaluation and purchase.

Other Java™ SOLUTIONS from Us

ElegantJ Data Table

Ready to use Table component that has all you wished to have. Also includes data access components

ElegantJ Tables

Ready to use Table component that has all you wished to have

ElegantJ Charts

Visualize THE Information Power
For more information, visit us at www.elegantjcharts.com

ElegantJ Report Writer

Simplifying Enterprise Reporting
For more information, visit us at www.elegantjreports.com

ElegantJ Data Tree

Feature-rich tree for hierarchical representation of data. Also includes data access components

ElegantJ Tree

Feature-rich tree for hierarchical representation of data

ElegantJ Indicator & Gauges

When monitoring of data changes is very important
For more information, visit us at www.elegantjcharts.com

ElegantJ Printer

Dynamic Printing made simple, fast, easy and the most flexible

ElegantJ Data Entry Masks

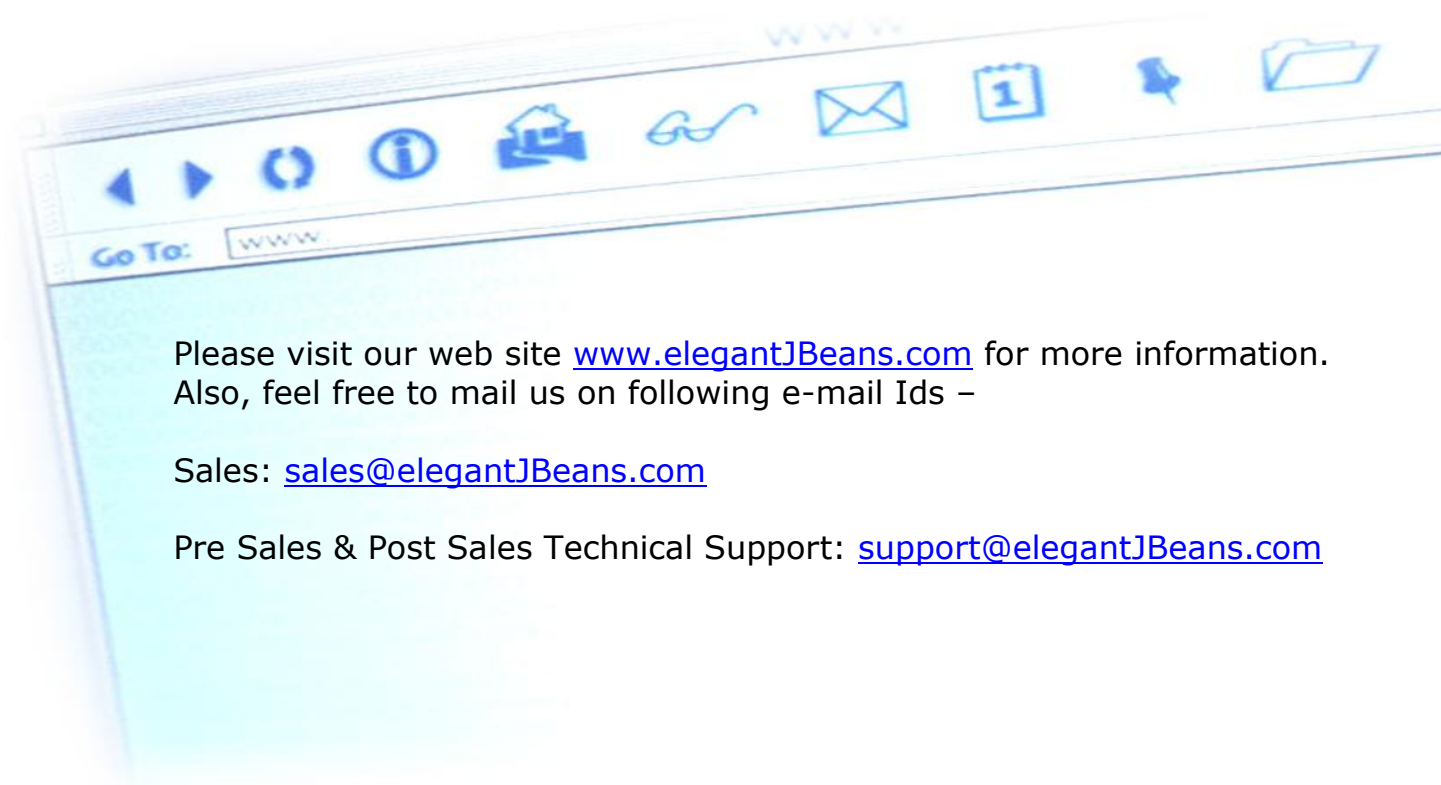
Ready Made validation logic for accurate data entry

ElegantJ PDF Library

The Ultimate JAVA™ Library for PDF Publishing
For more information, visit us at www.elegantjpdf.com

ElegantJ BI

Enterprise Business Intelligence and Reporting tool
For more information, visit us at www.elegantjbi.com



Please visit our web site www.elegantJBeans.com for more information.
Also, feel free to mail us on following e-mail Ids –

Sales: sales@elegantJBeans.com

Pre Sales & Post Sales Technical Support: support@elegantJBeans.com

ElegantJBeans™

Elegant MicroWeb Technologies Pvt. Ltd (EMTPL)

EMP3214B-ElegantJ Networking Bean - Version 1.0 - Published 2005

Copyright © Elegant MicroWeb Technologies Pvt. Ltd (EMTPL), all rights reserved

This document contains information that is proprietary and confidential to EMTPL, which shall not be disclosed, transmitted, or duplicated, used in whole or in part for any purpose other than its intended purpose. Any use or disclosure in whole or in part of this information without express written permission of EMTPL is prohibited.

Any other company and product names mentioned are used for identification purpose only, and may be trademarks of their respective owners and duly acknowledged

Java™ and JavaBeans™ are trademarks or registered trademarks of Sun Microsystems, Inc. in the United States and other countries. Any other company and product names mentioned are used for identification purpose only, and may be trademarks of their respective owners and duly acknowledged