

ElegantJBeans – Data Tables Installation Guide

Product Version 1.1
Document Version 1.1



Email: support@ElegantJBeans.com
Website: www.ElegantJBeans.com

© Elegant MicroWeb Technologies Pvt. Ltd.

Document Information	
Document ID	EJDaTa-IG-0307-V1.1
Version	1.1
Date	23-Mar-07
Recipient	NA
Author	EMTPL

Statement of Confidentiality, Disclaimer and Copyright

This document contains information that is proprietary and confidential to EMTPL, which shall not be disclosed, transmitted, or duplicated, used in whole or in part for any purpose other than its intended purpose. Any use or disclosure in whole or in part of this information without express written permission of EMTPL is prohibited.

Any other company and product names mentioned are used for identification purpose only, and may be trademarks of their respective owners and duly acknowledge.

Table of Content

1	INSTALLATION AND REGISTRATION	4
1.1	PREREQUISITE	4
1.2	INSTALLATION PROCEDURE	4
1.3	USING WITH DIFFERENT IDEs	5
1.3.1	BORLAND JBUILDER	5
1.3.2	ORACLE JDEVELOPER	8
1.4	GETTING REGISTERED	11
1.4.1	HOW TO PURCHASE	11
1.4.2	USING WITH GRAPHICAL USER INTERFACE OF IDE	11
1.4.3	USING DIRECTLY WITH SOURCE CODE	11
2	PRODUCT AND SUPPORT INFORMATION	12

1 Installation and Registration

1.1 Prerequisite

Before installing ElegantJ Beans, please ensure that your computer system and development environment are setup and working as per expectations. Person evaluating ElegantJ Beans is expected to be able to write and execute simple JAVA applications.

We provide free pre-purchase technical support to help you complete process of evaluation. Mail to support@elegantJBeans.com for pre-purchase technical support.

To be able to use ElegantJ Beans, your computer systems are required to have -

- An IDE that supports Java 2 or higher, or
- JDK 1.2.2 or higher

Please note that evaluation version of ElegantJBeans cannot be deployed for commercial, non-commercial or any other purpose in any possible way. You may not build any software, applets or applications for distribution with evaluation version of ElegantJBeans.

This evaluation version is to be solely used by you to evaluate suitability of ElegantJbeans for your needs. For more details please go through License Agreement.

1.2 Installation Procedure

On extracting `ejdatatables_v1.zip`, following directories will be created inside ElegantJDataTables directory-

Directory [jars] contains Jar file(s)

Directory [demos] contains demo application(s) with source code

Directory [docs] contains path for document(s) access

Installing on Windows 95/98

To include ElegantJ Beanery in CLASSPATH, add following statement to your `autoexec.bat` file,

```
set CLASSPATH= %CLASSPATH%;C:\ELEGANTJ\\jars\
```

Restart Windows to make changes effective.

Installing on Windows NT / 2000

Go to Control Panel and select System. You will find environment variables on Environment tab in Windows NT systems and on Advanced tab in Windows 2000 systems.

Find CLASSPATH environment variable or create it.

To include ElegantJ Beanary in the CLASSPATH, specify or add following value for variable -

```
[EXISTING-  
CLASSES];C:\<ELEGANTJ_BEANARY_HOME>\jars\<ELEGANTJ_BEAN>.jar
```

Installing on UNIX / Linux

Before you begin using ElegantJ Beanary, you must manually configure CLASSPATH environment variable. CLASSPATH must point to the location of classes and installation directory.

For example, to set CLASSPATH for ElegantJ Beanary,

```
setenv CLASSPATH ./usr/local/<ELEGANTJ_BEANARY_HOME>/jars/  
<ELEGANTJ_BEAN>.jar:
```

If you are using Bourne Shell, commands are,

```
CLASSPATH= $CLASSPATH:./usr/local/<ELEGANTJ_BEANARY_HOME>/jars/  
<ELEGANTJ_BEAN>.jar:export CLASSPATH
```

1.3 Using with Different IDEs

1.3.1 Borland JBuilder

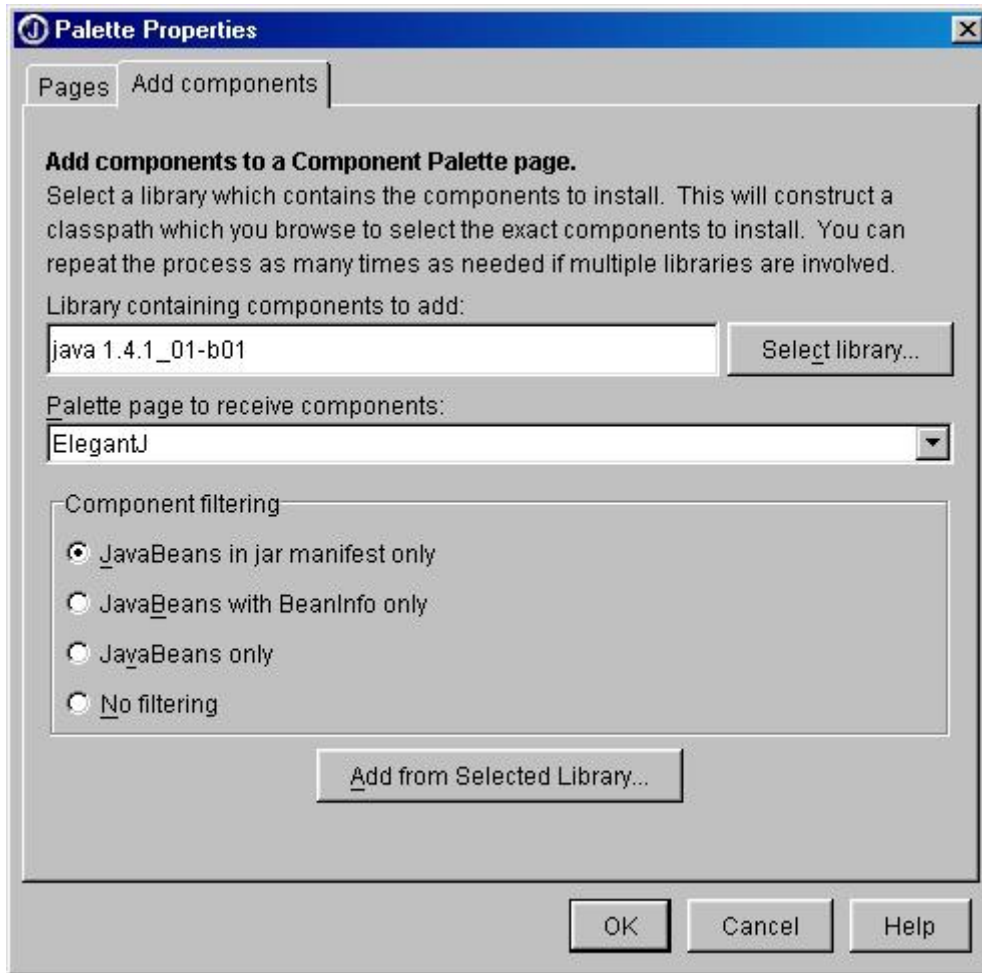
Follow the steps given below to create a new category and install Bean into Borland JBuilder.

Create a New Category

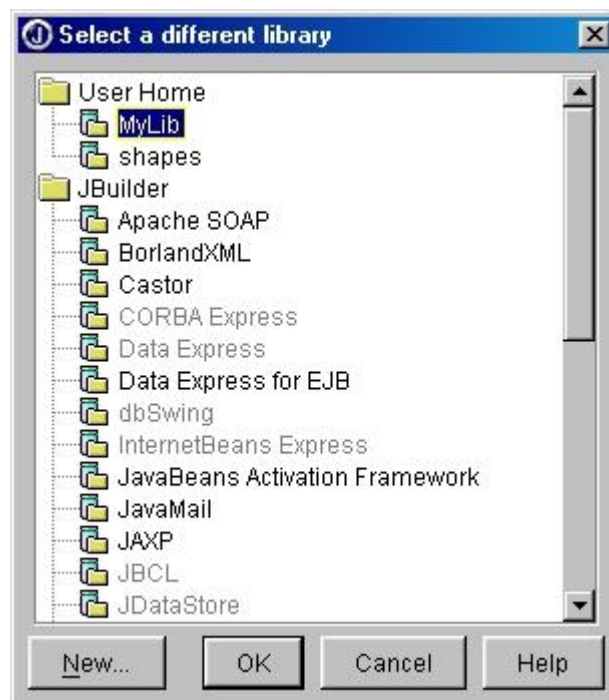
- Click menu **Tools > Configure Palette**. It opens **Palette Properties** dialog box.
- Click **Add** button. It opens **Add Page** Dialog box. Specify name (for example ElegantJ) and click **OK**. New Category gets created.

Create New Library and Install / Import Bean

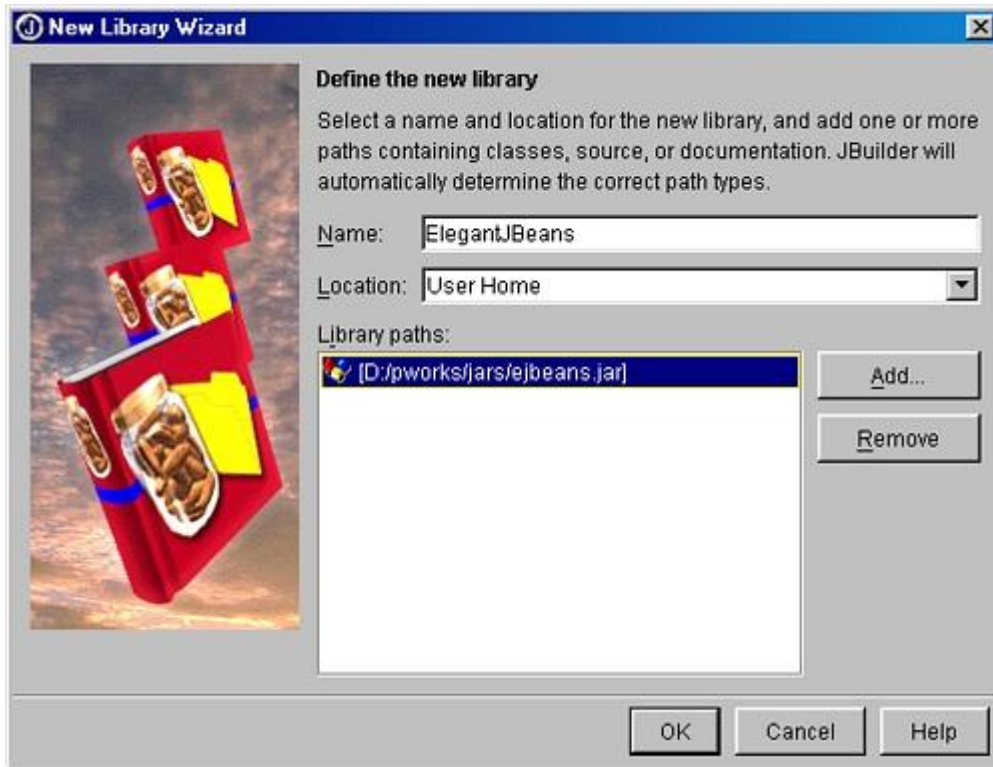
- On **Palette Properties** dialog box, click **Pages** tab. Select Newly created page (for example ElegantJ).



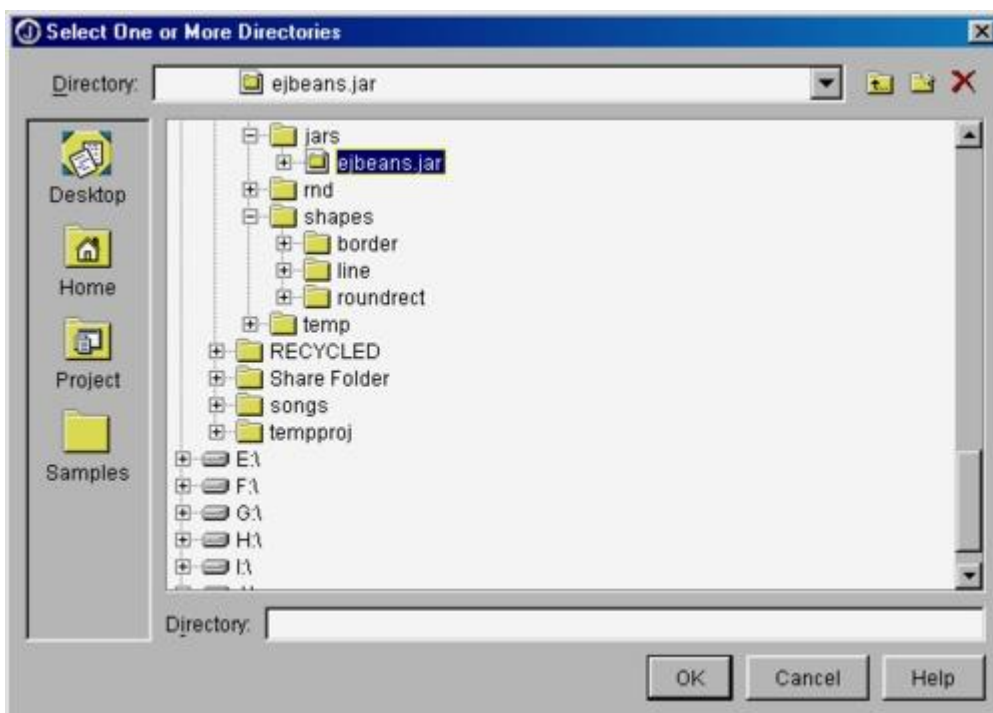
- Click button **Select Library. Select a Different Library** dialog box opens.



- Click **New** button on **Select a Different Library** dialog box. **New Library Wizard** dialog box opens.
- Specify name for library and click **Add** button. Select **One or More Directory** dialog box opens.



- Select directory where jar files are located, or select jar file to be imported. Click **OK**. Dialog box gets closed and **New Library Wizard** dialog box appears in front.



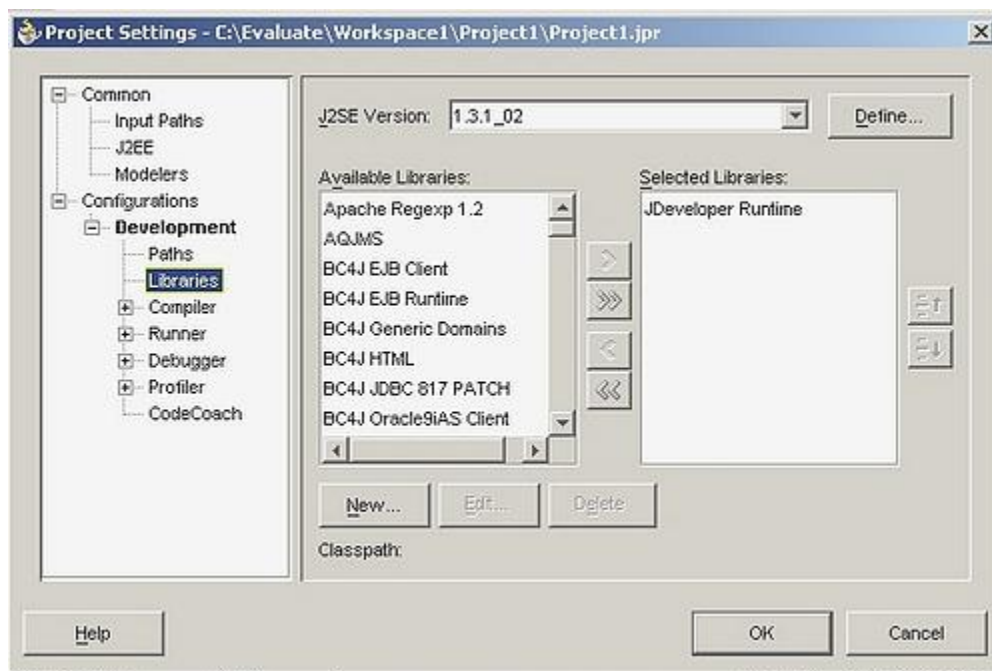
- Click **OK** on **New Library Wizard**. It opens **Select a Different Library** dialog box.
- Confirm that newly created library is selected. Click **OK**. It opens **Add Components** under **Palette Properties**.
- Click **Add from Selected Libraries** button. It opens **Results** dialog box, click **OK**.
- **Results** dialog box disappears. Click **OK** on **Palette Properties** dialog box.
- Beans are ready to use.

1.3.2 Oracle JDeveloper

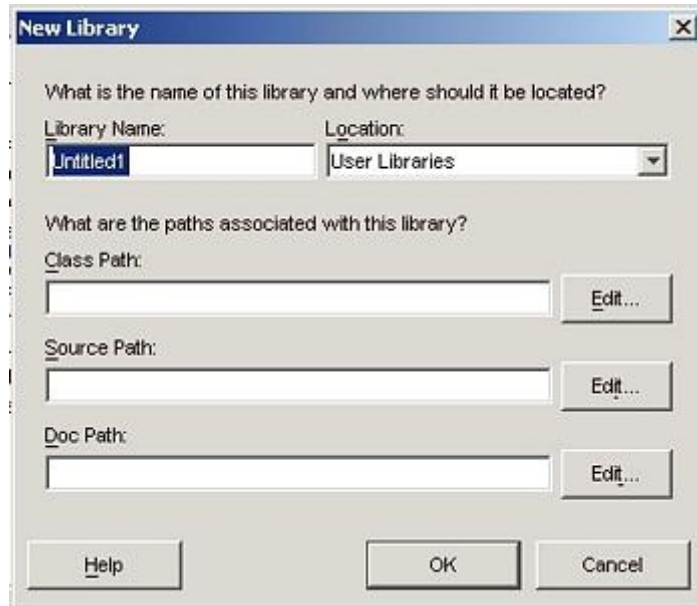
Follow the steps given below to import ElegantJ Beans in Oracle JDeveloper.

To Import beans into a project

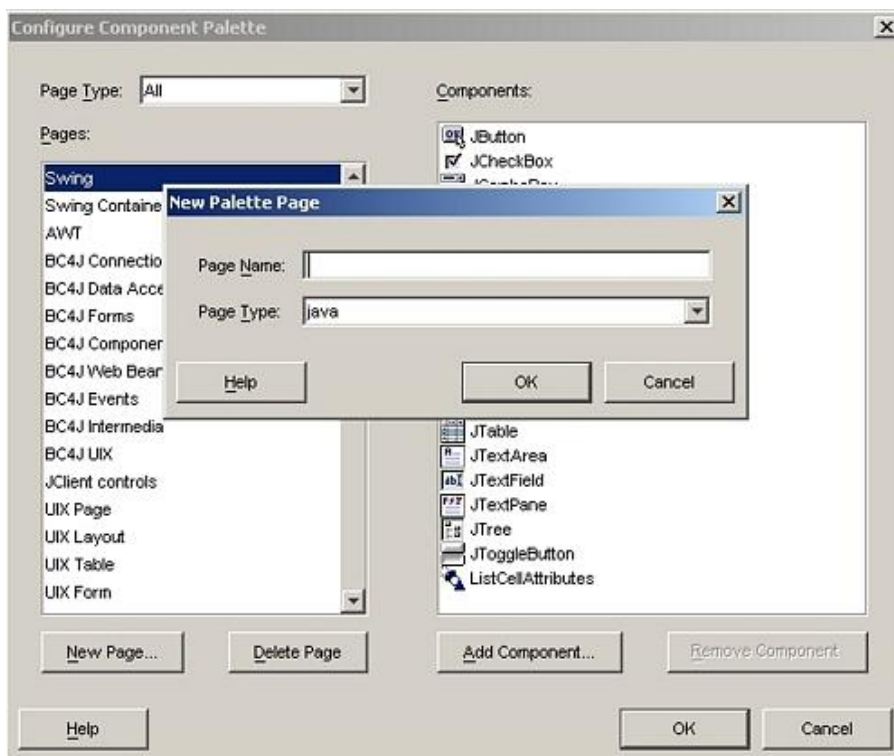
- Click menu **Project > Project Settings**. It opens **Project Settings** dialog box.



- Click **Libraries** entry appearing on the pane on left side.
- Click **New** button. It opens **New Library** dialog box.



- In **Library Name** entry box, specify Library name. In **Location** entry box, specify location where you want the library to be located. In **Class Path** entry box, specify path of jar file of Bean. Browse the location by clicking **Edit...** button if required.
- Click **OK**. The library you selected appears in **Available Libraries** list of **Project Properties** dialog box.
- Select the library you want and click > button to add it to **Selected Libraries** list.
- Click menu **Tools > Configure Component Palette**. It opens **Configure Component Palette** dialog box.
- To create a new palette page, click **New Page...** button. It opens **New Palette Page** dialog box. Specify **Page Name** and **Page Type**. Click **OK**. A new page with specified name will be created.



To add component to page

- On **Configure Component** dialog box, from **Pages** list, select the page and click **Add Component** button. It opens **Add JavaBeans** dialog box with available libraries.
- Select a library from **Library** combo box.
- Browse the hierarchy and select a component. It displays preview of icon for selected component. Click **OK**. It shows **Palette Confirmation** dialog box.
- Click **Yes** on **Palette Confirmation** dialog box to complete the process.
- Beans are ready to use.

1.4 Getting Registered

1.4.1 How to Purchase

You can purchase a license from our web site www.elegantJBeans.com

You can also contact our sales team sales@elegantJBeans.com

On purchasing a license, you will receive a mail having your license key.

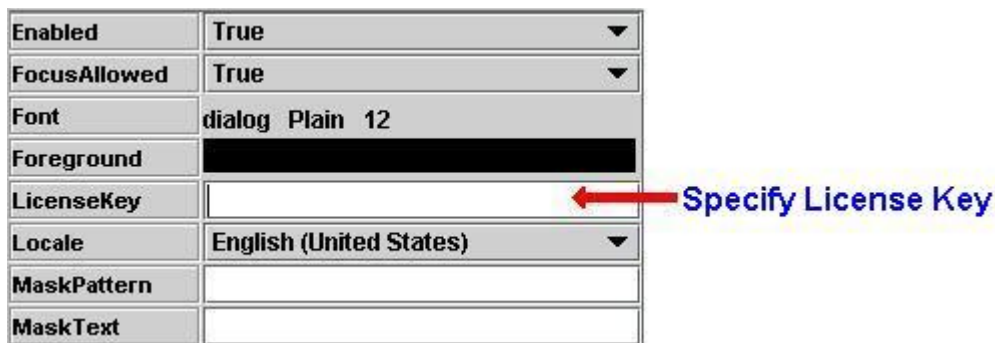
License key can be applied to ElegantJ JAVA bean using any of the following ways,

- Using with Graphical User Interface of IDE
- Using directly with source code

1.4.2 Using with Graphical User Interface of IDE

While Designing an application or an applet graphically in an Integrated Development Environment, you will find a property named **licensekey** along with other properties of the bean. Specify key (serial number) in LicenseKey Property.

Note: Instead of typing the license key, we suggest you to copy the license key from mail and paste it at required place. Make sure that the selection does not have any leading or trailing spaces.



1.4.3 Using directly with source code

When you use the Bean within code, you need to set the key by providing value in setLicenseKey Method.

Note: Instead of typing the license key, we suggest you to copy the license key from mail and paste it at required place. Make sure that the selection does not have leading or trailing spaces.

```
ClassName object = new ClassName();
object.setLicenseKey("LICENSE_KEY");
```

Example

```
AWTTree awtTree = new AWTTree();
awtTree.setLicenseKey("LICENSE_KEY");
```

2 Product and Support Information

Product and Support Information:

- You can find more information about ElegantJ Data Tables and its features on www.ElegantJBeans.com.
- Forward your support related mails to support@ElegantJBeans.com.
- Forward your sales related mails to sales@ElegantJBeans.com.

Feedback and Suggestions:

- We will be pleased to get your feedback as well as suggestions about our product.
- Forward any feedback or suggestions related mails to support@ElegantJBeans.com.